

# SUZUKI

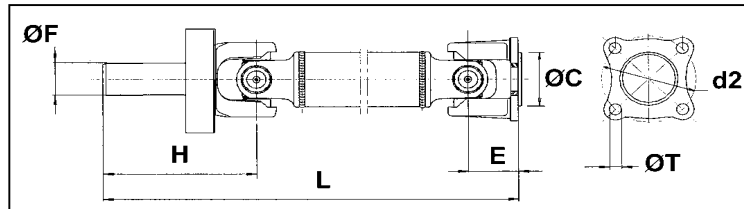


FIG. 1

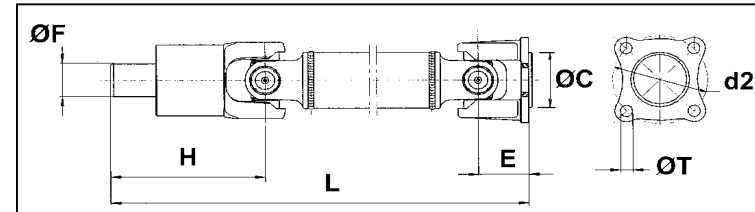


FIG. 2

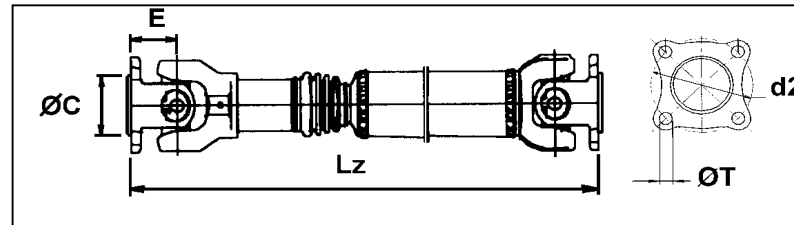


FIG. 3

(M)=Plato con guía de encaje macho.  
(H)=Plato con guía de encaje hembra.

REF. Cardyfren	FIG	MODELO	L / Lz	Lpm	PLATO				HORQUILLA ESTRIADA				ESTRIADO	
					ØC	d2	E	Nº Talad.	ØT	H	ØF			
SU31 5112015	1	VITARA	680	-	45 (M)	84,86	40	4	10,1	134	40	Z=16 / Ø27xM1,5	P/N: 27101-85C01	
SU31 5112016	1	VITARA	896	-	45 (M)	84,86	40	4	10,1	134	40	Z=16 / Ø27xM1,5	P/N: 27102B-60A01	
SU31 5112017	1	VITARA	896	-	45 (M)	84,86	40	4	10,1	134	40	Z=16 / Ø27xM1,5	P/N: 27102-60A11	
SU31 5130309	1	VITARA	792	-	45 (M)	84,86	40	4	10,1	134	40	Z=16 / Ø27xM1,5	P/N: 27102-85C10	
SU31 5130310	1	VITARA	1071	-	45 (M)	84,86	40	4	10,1	134	40	Z=16 / Ø27xM1,5	P/N: 27102-67D01	
SU31 5114102	1	SAMURAI	784	-	45 (M)	84,85	40	4	10,1	134	40	Z=16 / Ø27xM1,5	P/N: 27101-78EA0	
SU31 5112013	2	SAMURAI	403	-	45 (M)	79,19	40	4	8,2	113	32	Z=23 / Ø24xM1	P/N: 27101-84C00	
SU31 5112012	2	SAMURAI	382	-	45 (M)	79,19	40	4	8,2	113	32	Z=23 / Ø24xM2	P/N: 27101-C-80401	
SU31 5112018	2	SAMURAI	321	-	45 (M)	79,19	40	4	8,2	113	32	Z=23 / Ø24xM3	P/N: 27101-84CB0	
SU26 5112007	3	SAMURAI	712	732	45 (M)	79,19	40	4	8,2	-	-	-	P/N: 27102-D-80401	
SU26 5112008	3	SAMURAI	505	525	45 (M)	79,19	40	4	8,2	-	-	-	P/N: 27103-D-8041	
SU26 5112009	3	SAMURAI (G y D)	694	714	45 (M)	79,19	40	4	8,2	-	-	-	P/N: 27102-84C00	
SU26 5112010	3	SAMURAI	488	508	45 (M)	79,19	40	4	8,2	-	-	-	P/N: 27103-84C00	
SU26 5112011	3	SAMURAI (L. Body)	833	853	45 (M)	79,19	40	4	8,2	-	-	-	P/N: 27103-84C10	