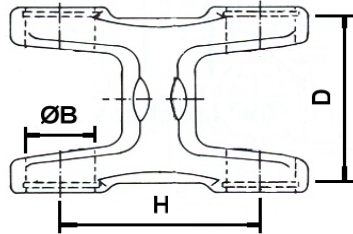


HORQUILLA DOBLE



TIPO DE CRUZ

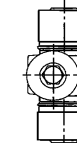


FIG. A

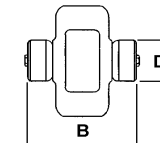


FIG. B

REF. Cardyfren	PARA CRUZ		SERIE	FIG.	H			OBSERVACIONES	VEHICULO		
	Ø D	B									
2771270H64	27	71			64					2300109500064	
2774270H70	27	74			70					2200109000070	
1310270H68	27	81,7	1310		68		26°	CASE 1845C		2-26-497	
1310270H85	27	81,7	1310		85		26°	CASE 1845C		2-26-477	
3079270H58	30	79	509		58					1.509.280.011	
3082270H70	30,2	82			70					2300209500070	
3083270H71	30	83			71					1409280011	
3295270H74	32	95,6			74					2532969500074	
34106270H102	34,9	106	2030		102					2687309500000	
3593270H81	35	93	B330		81					2300309501081	
3597270H80	35	97	112		80					1.112.281.201	
3597271H80	35	97	411		80					1.411.280.208	
38104270H72	38	104			72					2469309700100	
45152270H105	45	152	418		105					1.418.280.001	