

JUNTAS CORREDERAS MERCEDES



(CON MANGUITO CORREDERO)

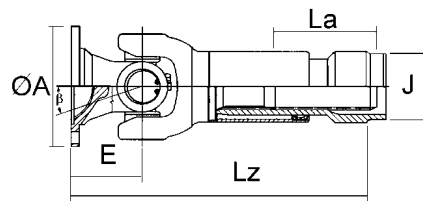


FIG. 1

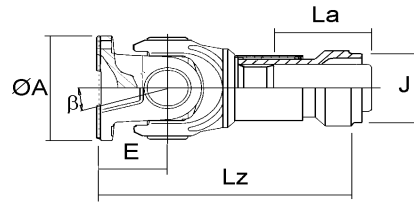


FIG. 2

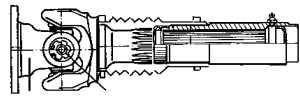
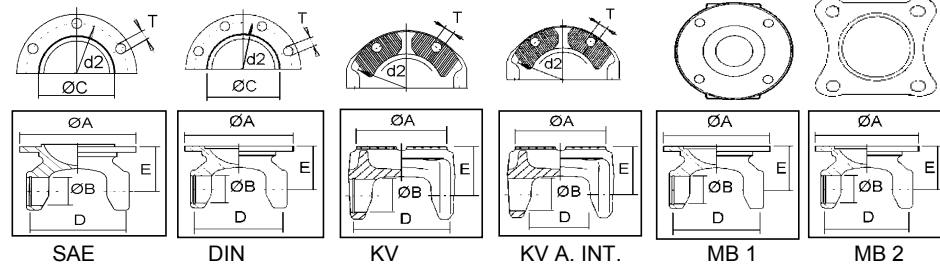


FIG. 3

TIPOS DE ACOPLAMIENTO



REF. Cardyfren	CRUZ		SERIE	FIG.	Lz	La	Ø J	TIPO	Ø A	N°T	Ø T	Ø C	E	d2	β	PARA TUBO	OBSERV.	EQUIV.				
	Ø B	D																				
MBSP 1001	27	74		3MB1				MB 1	120	4	10					70x2	SPRINTER	MB	7801150717000			
MBSP 1002	27	88		3MB2	260			MB 2	135	4	10					70x2	Nueva SPRINTER	MB	7801180717000			
0053 1001 16	35	96,8	0053	1	333	110	64,4	SAE	120	6	10	82,5	70	101,5	35°	70 x 3	Encaje macho	MB				
0063 1001 12	42	104,5	0063	1	367	110	73,4	SAE	130	8	10	82,5	80	112	35°	80 x 4	Encaje macho	MB				
2833 1001 01	48	126	2833	1	415	100	82,1	DIN	150	8	12	90	75	130	20°	90 x 4			286.33			
2833 1001 03	48	126	2833	1	430	100	82,1	DIN	180	8	14	110	90	155,5	25°	90 x 4			286.33			
2833 1001 02	48	126	2833	1	415	100	82,1	KV	154	4	13	KV70°	75	130	25°	90 x 4			286.33			
2837 1001 01	53	135	2837	1	461	150	90,3	DIN	150	8	12	90	86	130	25°	100 x 5			286.37			
2837 1001 02	53	135	2837	1	461	150	90,3	DIN	150	12	12	90	86	130	25°	100 x 5			286.37			
2837 1001 03	53	135	2837	1	461	150	90,3	DIN	165	8	16	95	86	140	25°	100 x 5			286.37			
2837 1001 04	53	135	2837	1	472	150	90,3	DIN	180	8	12	110	97	155,5	25°	100 x 5			286.37			
2837 1001 05	53	135	2837	1	472	150	90,3	DIN	180	8	14	110	97	155,5	25°	100 x 5			286.37			
2837 1001 09	53	135	2837	1	461	150	90,3	DIN	180	10	16	110	86	155,5	25°	100 x 5			286.37			
2837 1001 06	53	135	2837	1	465	150	90,3	KV	150	4	13	KV70°	90	130	25°	100 x 5			286.37			
2837 1001 07	53	135	2837	1	472	150	90,3	KV	165	4	13	KV70°	97	140	25°	100 x 5			286.37			
2837 1001 10	53	135	2837	1	465	150	90,3	KV	180	4	15	KV70°	90	150	25°	100 x 5			286.37			
3860 1002 01	53	135	3860	2	438	110	98,1	KV	180	4	15	KV70°	100	150	22°	110 x 6	Cruz clip interior	385.60				
3860 1001 01	68	89	3860	2	500	160	130,1	KV	180	4	15	KV70°	100	150	22°	140 x 5	Cruz clip interior	385.60				
0079 1001 01	68	117	0079	2	482	110	132	KV	200	4	15	KV70°	113	165	22°	144 x 7	Cruz clip interior	79	3126-79-02/03			