

SOPORTES DE RODAMIENTO

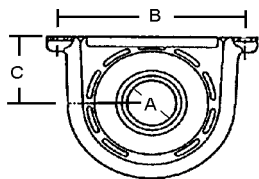
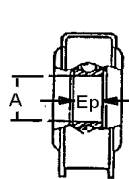


FIG. 1

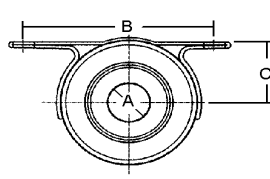


FIG. 2

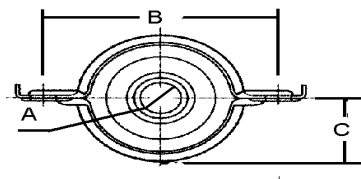


FIG. 3

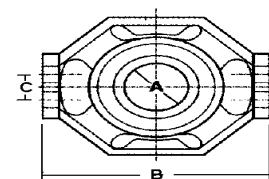


FIG. 4

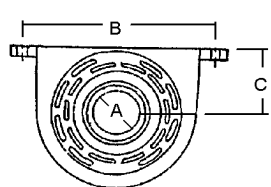


FIG. 5

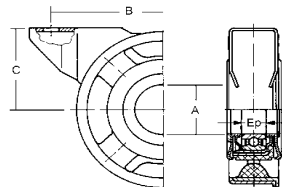


FIG. 6

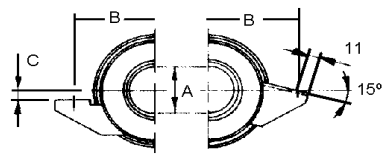


FIG. 7

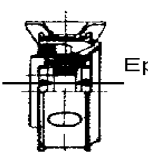


FIG. 8



FIG. 9

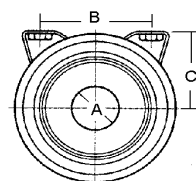


FIG. 10

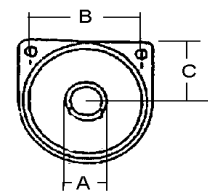


FIG. 11

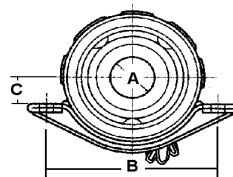


FIG. 12

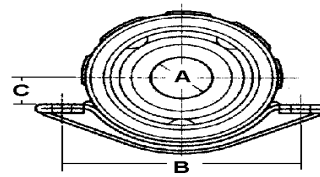


FIG. 13

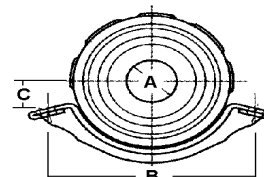


FIG. 14

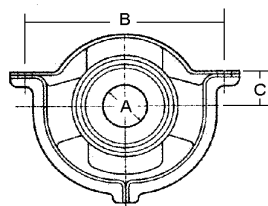


FIG. 15

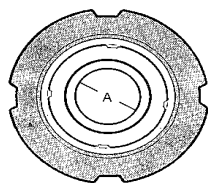


FIG. 16

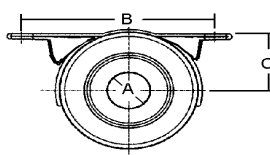


FIG. 17

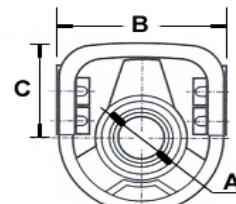


FIG. 18

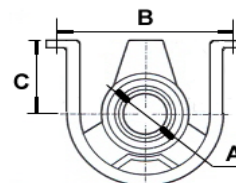


FIG. 19

SOPORTES DE RODAMIENTO



REF. Cardyfren	SERIE	FIG.	Ø A	B	C	Ep	OBSERVACIONES		
FMER013897M2	MB	14	25	118	15°	12	MERCEDES (124 410 01 81)		
FMER018727M1	MB	13	25	111	14	12	MERCEDES (201 410 05 81)		
FMER018117M9	MB	13	25	124	13,5	12	MERCEDES (202 410 03 81)		
VW30 010001	VW		30	68	70	20	VW TOUAREG		
FBMW015196B1	BMW	2	30	135	45	13	BMW (26 11 1 206 502)		
FBMW017108B2	BMW	17	30	140	63	13	BMW (26 12 1 225 152)		
FBMW012823B3	BMW	17	30	130	53	13	BMW (26 12 1 226 723)		
FBMW0121142	BMW						BMW (26 12 1 229 682)		
FBMW011846	BMW						BMW (26 12 1 226 731)		
FBMW014919	BMW						BMW (26 12 7 501 257)		
FMER012522M8	MB	13	30	120	19	13	MERCEDES (126 410 01 81)		
FMER017151M6	MB	13	30	131	15	13	MERCEDES (123 410 10 81 S)		
FMER013899M3	MB	14	30	116	15°	13	MERCEDES (124 410 02 81) (124 410 07 81 S)		
FMER017148M7	MB	13	30	125	27	13	MERCEDES (115 410 42 81)		
FMER017149M4	MB	13	30	124	27	13	MERCEDES (115 410 43 81)		
FMER017150M5	MB	12	30	125	25	13	MERCEDES (115 410 44 81)		
S130010001	FORD	7	30	150		13	FORD Transit (Fijación lateral, aleta recta)		
S130010002	FORD	8	30	140	15°	13	FORD Transit (Fijación lateral, aleta inclinada 15°)		
S130010003	FORD	9	30	144	63,3	13	FORD Transit (Fijación superior) (OCB.03013.122)		
S130010003K	FORD	9	30	144	63,3	13	FORD Transit (Fijación superior) (OCB.03013.122)		
EIVE010001	IVECO / VW	3	30	135	15°	13	IVECO EKUS / WOLKSWAGEN LT (293 521 351)		
LR30 010001	L-ROVER	-	30	138	63	13	LR FREELANDER		
LR30 010001-IM	L-ROVER		30	138	55	13	LR FREELANDER		
ITH8010001VA	GM	3	30	144	60	11	GM / OPEL		
IBRG010001J5	JAGUAR	10	30	76	64	13	JAGUAR		
OP 30 010001	OPEL	10	30	96	50	15	OPEL (0458.009)		
OP 30 010002	OPEL	-	30	96	50	15	OPEL (0458.014)		
IS30 010001	ISUZU		30	95	80	15	ISUZU		
IBRG010001V9	GM	11	30	110	50	13	BEDFORD / OPEL / G.M.		
MT30 010001	MITSU/HYUN	3	30	160	16	25	MITSUBISHI L-2000 y MONTERO / HYUNDAI / DODGE		
MT30010002	MITSUBISHI	3	30	163		16	MITSUBISHI MB154199		
TO30 010001	TOYOTA	-	30	205		13	TOYOTA RAV-4		
AU30 010001	AUDI	-	30	152		15	AUDI A4 (8D0521 113) (00096701)		
EBRG010001MB	MB	4	35	160	26	20	MERCEDES (460 410 0222) (Fijación lateral) (Redondo)		
D1310 10002	IVECO	1	35	168	57,2	25	DANA. (IVECO DAILY (93160324)(4390495))	211579-1X	
D1310 10001	1310	1	35	168	58	25	DANA 1310	210090-1X	
D1410 10002	IVECO	1	35	168	58	17	DANA 1410. (IVECO 9984261, 9932698)	SF210001-1X (4131703)	
1410 10002K	IVECO	1	35	168	60	17	Serie 1410 (IVECO 9984261, 9932698)		
FMER017062M11	MB	15	35	155	26	20	MERCEDES (310 410 0822)		
6825 010001	2025	1	40	168	63	18	COMPACT 2025 IVECO-EUROCARGO		
D141010003	IVECO	1	40	168	57,2	22	DANA. (IVECO DAILY 93158202)	211580-1X	
1310 0103	IVECO	1	40	168	57,2	22	DANA Cardan monotron (IVECO DAILY 4253 5254)	211926-2X	

SOPORTES DE RODAMIENTO



REF. Cardyfren	SERIE	FIG.	Ø A	B	C	Ep	OBSERVACIONES		
D141010001	1410	1	40	168	62,7	27	DANA 1410	210391-1X	
141010001K	1410	1	40	168	62,7	27	SERIE 1410		
MB45 010001	MB	18	45	160	96	19	MERCEDES ATEGO (670 411 0112)		
MBTR 0101	MB	6	45	194	72	19	MERCEDES 480, 409, 410 TRANSPORTER (601 410 1710)		
MBSP 0101	MB	19	45	195	71,5	19	MERCEDES SPRINTER (901 410 0312)		
FMER013538M12	MB	4	45	190	27	23	MERCEDES (381 410 1522 / 381 410 0222) (Fijación lateral)		
S130010004	FORD	9	45	144	61,2	16	FORD Transit (Fijación superior) (92VB4826BB)		
EIVD010001	IVECO	5	45	168	58	18	IVECO DAILY (9315 6460)		
6820 010001	2015/2020	1	45	168	58	18	COMPACT 2015 / 2020 IVECO-EUROCARGO		
MSRE 010001	RENAULT	1	45	168	58	18	RENAULT MASCOTT (50018579589)		
D155010001	1550	1	45	168	69	27	DANA 1550. (MAN)	21155-1X	
D160010001	1600	1	45	194	69	19	DANA 1600 / GC 606. (SF210003-2X). (IVECO 4682902)	6613450100060	
1600 10001K	1600	1	45	194	71	19	Serie 1600 / GC 606. (IVECO 4682902)		
D1610 10001	1610	1	45	194	69	27	DANA 1550 / 1610 / SPL90 / 2030 / 2035.	211886-1X (210084-2X)	
1610 10001K	1610	1	45	194	71,5	27	Serie 1550 / 1610 / SPL90.		
IBRG010001S10	DAF	10	45	80	59,5	16	DAF / VOLVO / FREIGHT ROVER.		
MA45 010001	MAN	1	45	200	18	69	MAN (81 39400 6089)		
D171010001	1710	1	50	194	69	30	DANA 1710 / SPL 140 / 2040 RENAULT	210121-1X	
6825 010002	2025	1	55	168	63	18	COMPACT 2025		
6830 010001	2025/30/35	1	55	194	70,5	18	COMPACT 2025 / 2030 / 2035.		
T240010001	2040	1	55	194	71,4	17	DANA COMPACT 2040 / 706/ 806. (IVECO 4674953)	2114401X (6613550100670)	
6840 010001	2040	1	55	200	69,1	18	2040 (DAF 1298157)		
E530010001	587.30	1	55	194	71,4	36	Tipo 587.30 (Rodamiento vulcanizado). IVECO 0248 3546		
FMER013393M13	MB	4	55	190	27	25	MERCEDES 385 410 1722 (Redondo)		
MB55 010002	MB	4	55	190	27	22	MERCEDES 973 410 0022 (Redondo)		
MB55 010001	MB	18	55	160	96	23	MERCEDES ATEGO (973 411 0012)		
DA55 010001	DAF	1	55	200	71	36	587.20 (DAF)		
6835 010001	2030/35	1	60	194	70,5	18	COMPACT 2030 / 2035		
D176010001	1760	1	60	200	80	36	DANA 1760 / SPL170 / 2045 / 2047 / 2055 RENAULT.	211402X	
T535010001	587.35	1	60	200	81	36	Tipo 587.35 (Rodamiento vulcanizado) (IVECO 0480 3933)		
EV40010001VO	VOLVO 400	1	60	198	79	30	VOLVO S.300 / 400 (621235)		
EVBM010001VO	BM 4.400	17	60	168	70	20	VOLVO BM 4.400 (hierro fundido) (6648769)		
VBRG010001SC	SCANIA	16	60	-	-	19	SCANIA 294 270 (P-300, P-400, P-500, P600)		
IV60 010001	IVECO	1	60	220	88	22	IVECO EUROSTAR (9315 7125)		
0680 01000IV	IVECO	1	60	220	88	36	Original IVECO (93157626) Herradura Fundición		
IV60 010002	IVECO	1	60	220	88	35	IVECO 9315 7626		
0680 01000DA	DAF	1	60	220	88	36	Original DAF (1288235)		
CSU4010001M16	MB	4	60	247	50	22	MERCEDES 654 410 0022 (Redondo)		
MB60 010001	MB	4	60	247	50	25	MERCEDES 389 410 0222 (Redondo)		
MB60 010001K	MB	4	60	247	50	25	MERCEDES 389 410 0222 (Redondo)		
MA65 010002	MAN	1	65	194	74	18	MAN (81369410-6028) (Para Horq. Corredera 0195 7005)		
MA65 010001	MAN	1	65	225	85,8	23	Original MAN (81 39410 6019)		

SOPORTES DE RODAMIENTO



REF. Cardyfren	SERIE	FIG.	Ø A	B	C	Ep	OBSERVACIONES		
EBRG010001MA	MAN	1	65	230	85,8	23	MAN (81 39410 6013 / 6017)		
0490 010001IV	IVECO	1	65	200	71,5	18	Original IVECO (42536078)		
0490 010002IV	IVECO	1	65	200	71,5	18	Original IVECO (42541384) (Tapa reten rodam. plástico)		
0590 010001DA	DAF	1	65	200	71,5	18	Original DAF (Arandela metal) (Obsoleto, reemplazado por 0590 010002DA)		
K590010001DA	DAF	1	65	200	82	18	DAF 1435557, 1323765.		
0590 010002DA	DAF		65	200	71,5	18	DAF 1731586		
0620 010004IV	IVECO	1	65	220	86	18	Original IVECO (cardan monotron 590)		
E542010001	587.42	1	70	220	87	20	IVECO (4208 7542), DAF (701756) (Rodam. vulkanizado)		
EV50010001VO	VOLVO 500	1	70	198	80	20	VOLVO S.500 1696389		
0700 010002DA	DAF	1	70	220	88	43	Original DAF (1288242)		
0700 010001IV	IVECO	1	70	220	88	43	Original IVECO (Herradura Fundición)		
FMER018776M14	MB	4	70	247	50	20	MERCEDES 655 410 0022 (Redondo)		
MB70 010002	MB	4	70	247	50	25	MERCEDES 395 410 0622 (Redondo)		
MB70 010002K	MB	4	70	247	50	25	MERCEDES 395 410 0622 (Redondo)		
MB70 010001	MB	18	70	190	96	20	MERCEDES ACTROS (656 411 0012)		
0620 010001DA	DAF	1	75	220	85,8	20	Original DAF (Arandela metal) 1740904		
0620 010002DA	MAN	1	75	230	89	20	Original MAN (cardan monotron 490)		
MB80 010001	MB	4	80	247		22	MERCEDES ACTROS (659 411 0112)		
0620 010003IV	IVECO	1	80	220	86	18	Original IVECO (cardan monotron)		
IV80 010001	IVECO	1	80	220	85	22	IVECO (4253 8889)		
MA85 010001	MAN	1	85	220	85	12	Original MAN (Cardan monotron)		
K196 010001MA	L-2000	6	100	194	68	13	Original/ MAN/ IVECO 81 39410 6016 / 9319 2009 (Para Horq. Corredera 0195 7004)		
0196 010001MAK	L-2000	6	100	194	68	13	MAN/ IVECO 81 39410 6018 / 9319 2009 (Para Horq. Corredera 0195 7004)		